



**CAMDENBOSS®**  
CONNECT. ENCLOSE. INNOVATE.



## Hex-Box IoT Enclosures by CamdenBoss

The UK manufactured Hex-Box IoT Enclosures have been designed with a focus on user-friendly customisation and flexibility at heart. These modern, feature filled enclosures are moulded from ABS UL94-V0 material and are 100% recyclable.

Create the perfect desktop enclosure by adding the Rubber Feet accessory, or create a wall mount enclosure solution by pairing the enclosure with the purpose designed Circular Wall Mount Bracket.



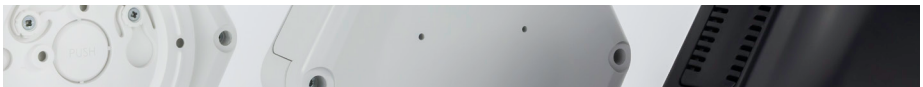
The convex lid and the concave base not only creates a modern aesthetic, but also allows for concealed mounting, keeping it flush to the wall.



The self-retaining, removable solid and vented end panels allow air flow or cable entry from any side. Position your panels in a combination that works for your device.



You have the flexibility to mount your PCB in either the top or base. There are six bosses in the top and four in the base, positioned to accept a Raspberry Pi board.



01638 716101 | [sales@camdenboss.com](mailto:sales@camdenboss.com) | [www.camdenboss.com](http://www.camdenboss.com)



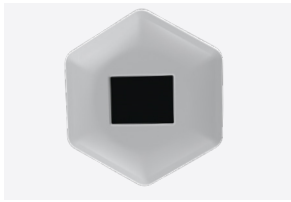
Number indexing labels at each opening, aids wall mounting and PCB positioning.



An internal drilling guide for cable entry aligns with the 25mm knock-out on the wall mount bracket.



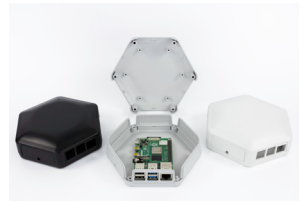
Use the lug mounting holes on the base to attach your bracket in a position that works for you.



The smooth bevelled lid with flat top is ideal for a 2.5" screen and the flat surface can be easily digitally printed.



Easily locate the lid fixing points using the marked '+' symbols.



Save time on customisation by opting for our Pi ready Hex-Box IoT Enclosure. Two pre-customised panels allow for Raspberry Pi connections.

## ENCLOSURE DIMENSIONS

EXTERNAL (LxWxH)	INTERNAL (LxWxH)	WALL THICKNESS
146 x 130 x 45 mm	122.5 x 125.5 x 34.5 mm	2.5 mm

## PCB SIZE

Mount your PCB in either the lid (maximum 122.2mm PCB) or base (maximum 121.7mm PCB).

## CHOOSE YOUR HEX-BOX IOT ENCLOSURE COMBINATION

OPTION	DESCRIPTION	GREY (GY)	BLACK (BK)	WHITE (WH)
Option 1	1 x enclosure and 6 x solid panels	CBHEX1-60-GY	CBHEX1-60-BK	CBHEX1-60-WH
Option 2	1 x enclosure, 5 x solid panels and 1 x vented panel	CBHEX1-51-GY	CBHEX1-51-BK	CBHEX1-51-WH
Option 3	1 x enclosure, 4 x solid panels and 2 x vented panels	CBHEX1-42-GY	CBHEX1-42-BK	CBHEX1-42-WH
Option 4	1 x enclosure, 3 x solid panels and 3 x vented panels	CBHEX1-33-GY	CBHEX1-33-BK	CBHEX1-33-WH
Option 5	1 x enclosure, 2 x solid panels and 4 x vented panels	CBHEX1-24-GY	CBHEX1-24-BK	CBHEX1-24-WH
Option 6	1 x enclosure, 1 x solid panel and 5 x vented panels	CBHEX1-15-GY	CBHEX1-15-BK	CBHEX1-15-WH
Option 7	1 x enclosure and 6 x vented panels	CBHEX1-06-GY	CBHEX1-06-BK	CBHEX1-06-WH
Option 8	1 x enclosure, 2 x customised solid panels to accommodate Raspberry Pi4, 2 x solid panels and 3 x vented panels	CBHEX1-PI4-GY	CBHEX1-PI4-BK	CBHEX1-PI4-WH
Circular Wall Mount Bracket	1 x circular wall mount bracket, 3 x screws, 3 x lugs	CBWMC-GY	CBWMC-BK	CBWMC-WH
Rubber Feet	6 x rubber feet (available in black only)	CBHEX-FEET		

## ACCESSORIES (sold separately)

### WALL MOUNT ACCESSORY Circular Wall Mount Bracket

Transform your Hex-Box IoT Enclosure into a wall mountable enclosure with the Circular Wall Mount Bracket (sold separately). This revolutionary circular mounting bracket is packed full of mounting options and offers seamless and discrete mounting to retain the modern aesthetic look of your housing, whilst gaining additional functionality.



Two keyhole mounting slots for quick and easy mounting.



Raised rib stand-offs help with stability of the enclosure on uneven surfaces and walls.



Two sets of mounting points in off centre orientations suitable for UK single gang box.



25mm cable entry knock-out for cable management. Customisation to the base required (using the guide provided).



It's easy to install, just screw the lugs to the enclosure, attach the enclosure to the bracket and twist the enclosure 30 degrees.



Four static mounting points/slots provide easy and flexible wall mount fitting.



## DESK MOUNT ACCESSORY

### Rubber feet

The six rubber feet (CBHEX-FEET) turn your Hex-Box IoT Enclosure into a tabletop enclosure (sold separately). Simply push the feet into the holes in the base of the Hex-Box IoT Enclosure.



## POTENTIAL INDUSTRIES / APPLICATIONS

Industrial IoT, smart home, smart office, retail, speaker/alarm buzzer, meeting room device, network equipment, environmental sensor equipment, development board electronics.

## CUSTOMISATION OPTIONS

Digital printing, screen printing, machining/drilling and engraving.



Learn more about the Hex-Box IoT Enclosure by visiting  
[www.camdenboss.com/Hex-Box-IoT-Enclosure](http://www.camdenboss.com/Hex-Box-IoT-Enclosure)



Discover more of our UK manufactured enclosures by visiting  
[www.camdenboss.com](http://www.camdenboss.com)